

PAID RESEARCH STUDIES:

Examining how learning and decision-making change as the brain develops
Seeking children, teens, and adults ages 6-30 to participate in our research

Receive: \$15/hour plus possible bonus \$

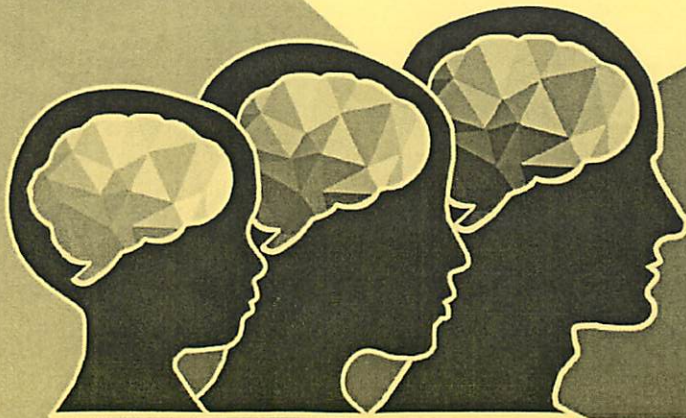
Approximate length of time: Up to 3 hours

Activities: Play computer games and fill out questionnaires

Location: Room 888, 6 Washington Pl, New York University

To sign up: For kids and teens: visit bit.ly/childsignup

For adults: visit bit.ly/adultparticipantsignup



Contact: 212-998-7605
hartleylab@nyu.edu
www.psych.nyu.edu/hartleylab

Approved for posting 7/3/17